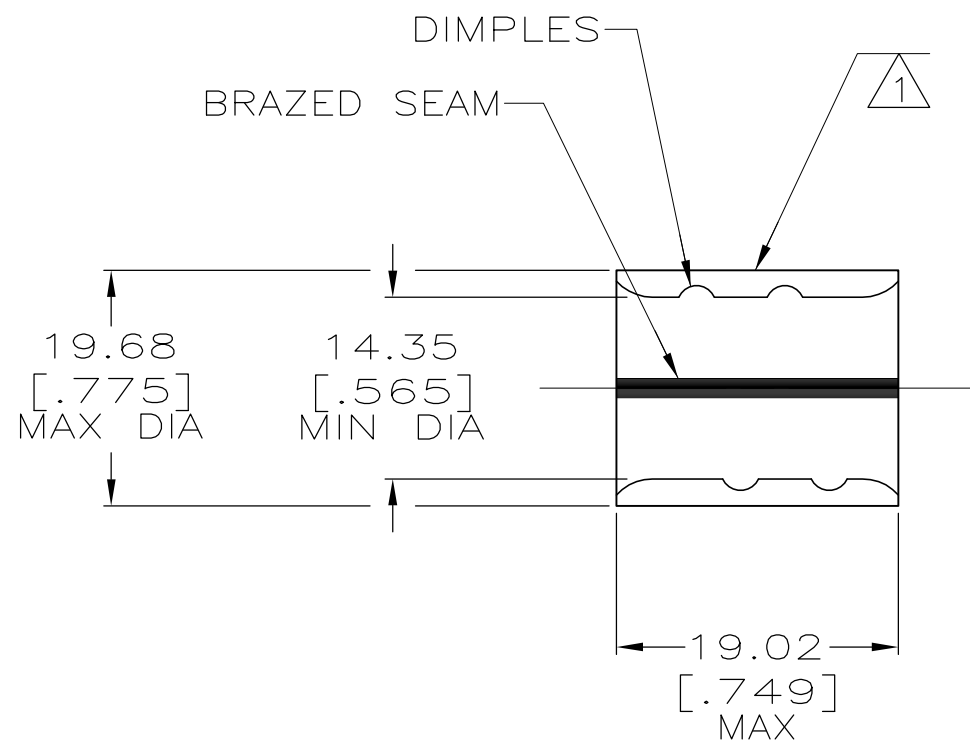


THIS DRAWING IS UNPUBLISHED. RELEASED FOR PUBLICATION
 © COPYRIGHT BY TYCO ELECTRONICS CORPORATION. ALL RIGHTS RESERVED.

LOC	DIST	REVISIONS					
G	14	P	LTR	DESCRIPTION	DATE	DWN	APVD
			E1	REV PER ECR 08-010969	01MAY08	JR	RL

AMP WIRE RANGE	Listed FILE E13288	LR7189 Certified
3/0 AWG SOLID OR STRANDED	3/0 AWG STRANDED	3/0 AWG SOLID OR STRANDED



- ① STAMP AMP 3/0W* 150 LOCATE APPROX AS SHOWN
- ② MATERIAL THK: 2.31 ±0.08 [0.091 ±0.003]
- ③ TIN PL 0.00254 [0.000100] MIN THK PER ASTM B545.
- ④ CLEANED, UNPLATED
- ⑤ P/N 1-36909-1 IS NOT UL OR CSA LISTED.
- ⑥ STAMP FOR MANUFACTURING LOCATION OR CODE PERMISSIBLE.
- ⑦ PREPRODUCTION - FASR REQ.
- ⑧ NOT UL OR CSA LISTED
- ⑨ 0.00254 [0.000100] MIN TIN-LEAD (60/40) PLATE PER SAE-AMS-P-81728
- ⑩ PRELIMINARY - NOT FOR PRODUCTION

⑨	-	LOOSE PIECE	⑧⑩ 36909-2
④	-	LOOSE PIECE	⑤⑦ 36909-1
③	-	LOOSE PIECE	36909
FINISH	QTY	PACKAGE TYPE	PART NO

AMP INCORPORATED CUSTOMER SERVICE SYSTEMS		MAX RECOMMENDED OPERATING TEMPERATURE: 170° C	THIS DRAWING IS A CONTROLLED DOCUMENT.		DWN JR RUTH 14FEB01	Tyco Electronics Corporation Harrisburg, Pa 17105-3608					
FOR ADDITIONAL PRODUCT INFORMATION OR COPIES OF DRAWINGS AND TECHNICAL DOCUMENTS	PRODUCT INFORMATION CENTER 1-800-522-6752	VOLTAGE RATING: N/A	DIMENSIONS: INCHES	TOLERANCES UNLESS OTHERWISE SPECIFIED:	CHK MS FEHER 14FEB01	NAME SPLICE, PARALLEL, SOLISTRAND					
FOR APPLICATION TOOLING INFORMATION	TOOLING ASSISTANCE CENTER 1-800-722-1111	CIRCULAR MIL AREA: 150,500-190,000 SOLID OR STRANDED		0 PLC ± - 1 PLC ± - 2 PLC ± 0.20[.008] 3 PLC ± - 4 PLC ± - ANGLES ± -	APVD M SPICER 14FEB01	PRODUCT SPEC	-	-			
FOR ORDER ENTRY	1-800-526-5142	THIS DRAWING IS A CONTROLLED DOCUMENT FOR AMP INCORPORATED. IT IS SUBJECT TO CHANGE AND THE CONTROLLING ENGINEERING ORGANIZATION SHOULD BE CONTACTED FOR THE LATEST REVISION.	MATERIAL COPPER ASTM B-152 ANNEALED	FINISH SEE TABLE	APPLICATION SPEC	-	-	-			
CUSTOMER DRAWING					WEIGHT	-	SIZE A3	CAGE CODE 00779	DRAWING NO G-36909	RESTRICTED TO	-
					SCALE	2:1	SHEET	1 OF 1	REV	E1	